

COMPLETE STAND VERSION C (from 9 m²)



Leipziger
Buchmesse

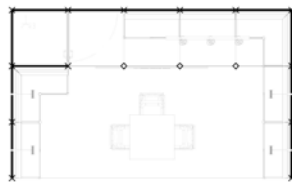
18–21 March 2027

A REAL ALL-ROUNDER

From product presentations and business meetings to community engagement: Our **VERSION C** is a true all-rounder, especially if you want to make a big impression with a larger display area and invite lots of visitors to browse at the same time. Empty shelves can be restocked in no time at all from the integrated, lockable storage compartment. Your trade fair presence couldn't be better organised.



Example image
ROW STAND, 15 m²



Floor plan
ROW STAND, 15 m²



Example image
CORNER STAND, 15 m²



Floor plan
CORNER STAND, 15 m²

OUR STAND CONSTRUCTION SERVICES

- Support and frame elements, 250 cm high, 8-chamber groove system, white wall infill (other colors at an extra charge)
- 1x 2 m panel, 30 cm high on stand rear wall, white, optionally with panel lettering 25 letters, numbers, characters; height: 10 cm; font: Futura medium, color: dark grey; or panel logo based on a vectorized graphic file
- All-round Book holders white, 4 pieces per wall element on top of each other (Number customizable on request)
- All-round Pedestals with sliding doors, white (außer Kabine), (Please order prack lock separately)
- 1 long-arm spotlight per ² m2 of floor space
- 1 triple socket (power connection is charged separately)
- anthracite textile floor covering
- Furniture: 3 upholstered chairs, 1 table (70x70x74), white
- 1 cubicle with a lockable door (1 m²)
- 1 coat rack
- 2 shelves

Additional services: Depending on the size of your registered stand, you will receive a contingent of free exhibitor passes and the opportunity to register events in the program. Further information can be found in the Special Conditions of Participation.

Calculation example for a 15 m ² exhibition stand	Registration by 18.08.2026 (Special price)	Registration by 19.08.-01.11.26 (Basic price)
Trade fair rental incl. stand construction	9,765.00 €	10,860.00 €
Sustainability fee	97.50 €	97.50 €
Marketing basic package	219.00 €	219.00 €
Electrical connection (2 kW incl. electricity consumption)	273.00 €	273.00 €
AUMA-contribution	9.00 €	9.00 €
Free exhibitor passes (according to area key)	4 passes	4 passes
TOTAL COSTS	10,363.50 €	11,458.50 €

